

UNIVERSITY OF
Southampton

YOU'LL BE MADE HERE

University of Southampton
Student Guide for Study Abroad and Exchange 2021

FOUNDING MEMBER
OF THE
**RUSSELL
GROUP**

CHOOSE SOUTHAMPTON

NATIONAL
OCEANOGRAPHY CENTRE
SOUTHAMPTON (NOCS)

BOLDREWOOD
INNOVATION
CAMPUS

WINCHESTER
SCHOOL OF ART

UNIVERSITY HOSPITAL
SOUTHAMPTON NHS
FOUNDATION TRUST (UHS)

AVENUE
CAMPUS

HIGHFIELD
CAMPUS



Top 100

Global University*



Top 20

UK University**



Top 150

institution for
employability (worldwide)***

*QS World University Rankings 2019

** The Complete University Guide 2019,
The Sunday Times Good University Guide 2019

*** QS Graduate employability rankings, 2018

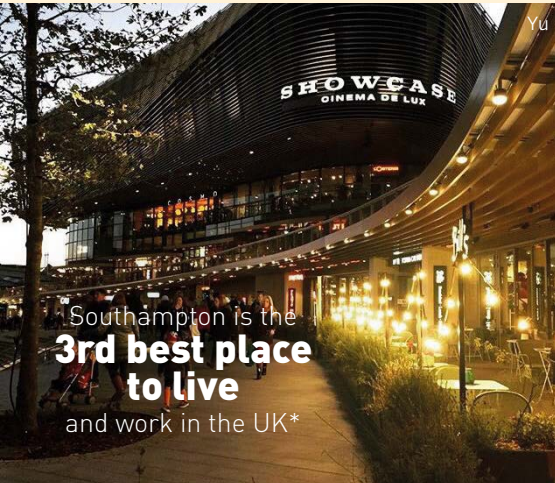


Dive in and watch our city hyperlapse video.

Search for: **Our Incredible City | University of Southampton**



YOUKU 优酷



Southampton is the
**3rd best place
to live**
and work in the UK*



Winchester is the
**happiest place
to live**
in the UK**



- 01 Ocean Village
- 02 Westquay Watermark
- 03 Winchester Cathedral
- Images by current students from Instagram**
- 04 Highfield Campus in the spring¹
- 05 Southampton's waterfront²
- 06 Southampton Pride³

Southampton and Winchester

Just 10 minutes apart by train, Southampton and Winchester are two prime cities on the south coast of the UK. Winchester, home to the Winchester School of Art (WSA), is steeped in history and Southampton combines an ancient past with thriving modern developments.



*Source: Latest Good Growth for Cities Index, 2017, DEMOS-PwC

**Source: Royal Mail UK Happiness Index 2019.

¹ By Instagram user @ayahsoufan

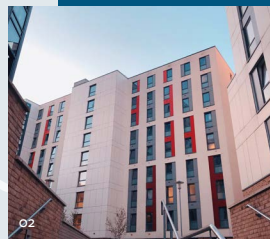
² By Instagram user @ygao317

³ By Instagram user @miaoasu

University of Southampton



- 01 Mayflower Halls¹
- 02 Mayflower Halls²



Accommodation

Choose accommodation to fit your requirements in either purpose built student accommodation (halls) or in a privately rented house or flat. Halls have **24 hour security** and support services and **WiFi** in all rooms. Halls in Southampton include the **UniLink bus pass** for convenient travel around the city.

www.southampton.ac.uk/accommodation

Accommodation Guarantee

We can guarantee accommodation for students applying outside of the European Union



We strongly encourage you to apply by the deadline in order to secure accommodation. The deadlines are:

- 1 August for semester 1 entry.
- 15 December for semester 2 entry.

For alternative private rented accommodation, the Residence Service has a range of resources to help your search.

^{1,2} Images by Instagram user and current student @micky_zhang25

THINGS YOU SHOULD KNOW

Living Costs

- We recommend that you allow £7,500 to £8,800 for living expenses for each academic year. This should cover accommodation, food, books and entertainment.
- For further details, please go to: www.southampton.ac.uk/student-life/support-money/student-living-costs
- It's a good idea to work out your own budget for your circumstances. Your costs will be higher if you choose private accommodation for example.
- International students will need to show you can afford to live and study in the UK when you apply for your visa. Our Visa Team are here to support you with your visa application.

Costs Estimated by Hotcourses (annually)	
University Hall fees/ private accommodation rent	£3,840
Mobile phone bill	£300
Travel and transport	£360
Food and housekeeping	£1,680
Clothes and shoes	£480
Leisure and sport	£300
Books and stationery	£480
Socialising	£1,440
Other expenses	£180
Costs estimated by the British Council (per item)	
Pub lunch	£6
Fish and Chips	£3
Indian take-away meal	£5-£10
Cinema tickets	£5-£10
Premiership football match tickets	£75-£100
Game of ten pin bowling	£4

Student visas

- If you are from the EU, the EEA or Switzerland, you would not normally require a visa to enter the UK however, once the transition period ends in January 2021, guidelines may change. We recommend you stay up to date through your home University and the UK Government website.
- The University has its own dedicated Visa Guidance Team which can assist you with any questions you might have about applying to come to the UK as a general student or as a student visitor. Information about the application process in your country and the documents you will require to support your application can be found on the UK Visas and Immigration Service Website: www.gov.uk/browse/visas-immigration/student-visas.

Airport pick up Meet and Greet

- To ensure the smoothest arrival at Southampton for new international and European students, we run a free Meet and Greet service from London Heathrow and London Gatwick airports. You will receive more information about this service once you have received your offer letter. Alternatively you can fly directly to Southampton Airport which links to all over Europe and beyond.

“It is very encouraging to arrive and discover how **welcoming** Southampton is. I love its **multicultural essence** and that I can relax surrounded by **green areas** all around the campus and city. It is also a very **well-connected place** so I can easily fly to Europe or go to another UK city at the weekend.”

Stéphanie Rabasa
MSc Digital Marketing
Swiss Italian Peruvian
Santander and Southampton
Business School Scholar

“After having spent time studying at different universities, here at Southampton, in the pursuit of wisdom, I found **friends that nurtured** this longing for truth and allowed the **seeds of curiosity** to blossom. And for that I’m ever grateful.”

Shoaib Shaikh
BA Philosophy with Year Abroad
Indian Omani

Stéphanie (left) and Shoaib (right) relaxing in Valley Gardens on campus, also known as our Secret Garden



Find out more:

<https://www.southampton.ac.uk/courses/exchanges/come-to-southampton.page>

Study Abroad and Exchange enquiries:

Europe: erasmus@soton.ac.uk

International: studyabroad@soton.ac.uk



@sotonabroad



@sotonabroad



UoS - Study Abroad & Exchange

University of Southampton

+44 (0)2380591723